

6615 W. 135th Street

Overland Park, KS

SPACE FOR LEASE



Site Highlights

- 3,152± SF inline space at Corbin Park strip center
- Former real estate office with 7 offices within the space
- Over 3 million square feet of retail immediately surrounding the property
- Excellent visibility with rare frontage along 135th Street with 33,300 VPD.
- Located in the Corbin Park shopping center with Von Maur, JCPenney, Dave & Busters, Scheels, Petco, BRKTHROUGH and more!

Demographics	1 Mile	3 Miles	5 Miles
Population Density	12,448	88,872	187,022
Average Household Income	\$139,913	\$154,706	\$142,632

Source: CoStar

Contact us

David Hickman
david@vadllc.com
Office: 913-491-8900
Mobile: 816-898-8531

**VARNUM
ARMSTRONG
DEETER**

11837 College Blvd. | Overland Park, KS 66210 | www.vadllc.com

6615 W. 135th Street Overland Park, KS

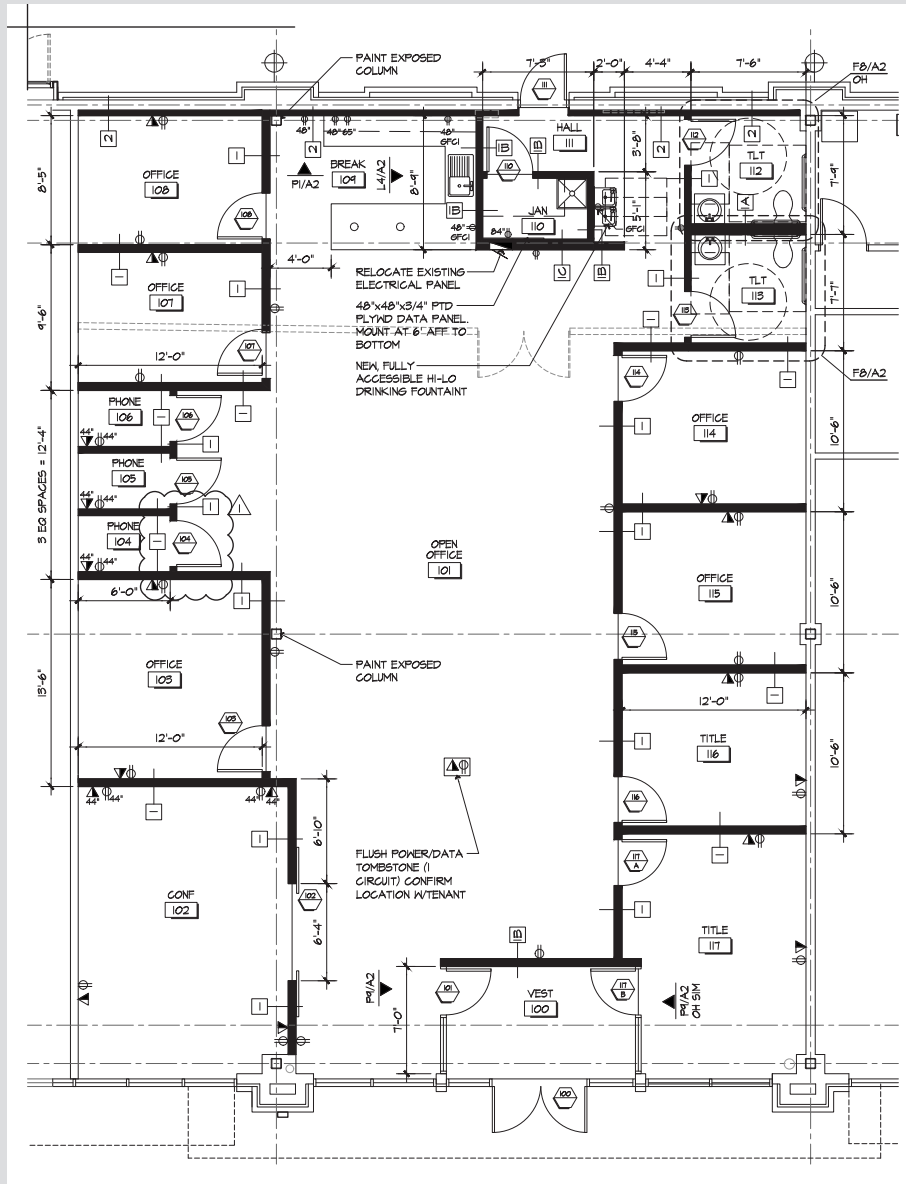


6615 W. 135th Street Overland Park, KS



Traffic Counts Source: Johnson County GIS

6615 W. 135th Street Overland Park, KS



David Hickman
david@vadllc.com
Office: 913-491-8900
Mobile: 816-898-8531

11837 College Blvd. | Overland Park, KS 66210 | www.vadllc.com

Disclaimer: The information provided herein is believed to be reliable, but we cannot guarantee its accuracy or completeness. We have not independently verified the information, and make no warranty, representation, or guarantee, either expressed or implied, as to its reliability, suitability, or availability. Any projections, opinions, assumptions, or estimates provided are for illustrative purposes only and do not necessarily reflect the current or future performance of the property. It is recommended that you and your advisors conduct an independent investigation of the property to ensure it meets your needs. Any photos and logos featured are the property of their respective owners, and their unauthorized use is prohibited.